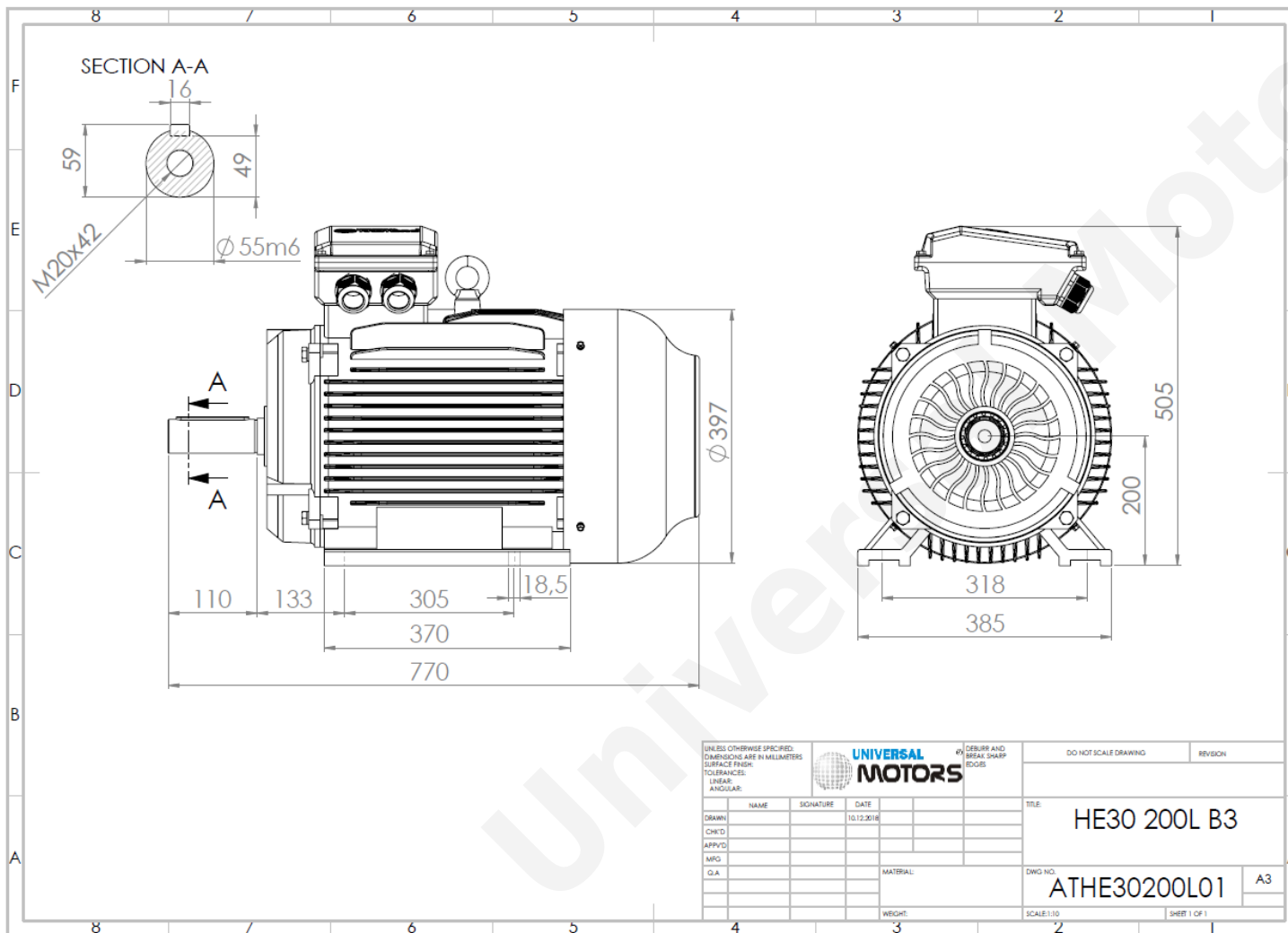




TECHNICAL DATA

Three Phase Electric Motors - Cast Iron Frame
 HE30 200 L-6 IE2
 18.5 kW / 25 Cv
 980 RPM



Motor type:	HE30 200 L-6 IE2
Output:	18.5 kW / 25 Cv
Speed (min ⁻¹):	980 RPM
Frequency:	50 Hz
Voltage:	400 V
Current:	36.5 A
Power factor (Cos Ø):	0.81
Poles:	6
Insulation class:	F
Temperature rise Class:	B
Efficiency 50%:	90.1 %
Efficiency 75%:	90.9 %
Efficiency 100%:	90.4 %
Torque:	180 N.m
Tstarting/Tnominal:	2.1
Istarting/Inominal:	7.2
Tmaximum/Tnominal:	2.1
Noise:	62 Db(A)
Weight:	234 Kg
Bearing DE:	6312 C3
Bearing NDE:	6312 C3

UNLESS OTHERWISE SPECIFIED, DIMENSIONS ARE IN MILLIMETERS				UNIVERSAL MOTORS		DO NOT SCALE DRAWING		REVISION	
SURFACE FINISH:				DEBURR AND BREAK SHARP EDGES		TITLE: HE30 200L B3			
TOLERANCES:						DWG NO: ATHE30200L01			
LINEAR:						SCALE: 1:10			
ANGULAR:						SHEET 1 OF 1			
NAME	SIGNATURE	DATE							
DRAWN		10.12.2018							
CHK'D									
APP'VD									
MFG									
Q.A									
MATERIAL:				DWG NO:		A3			
WEIGHT:				SCALE: 1:10		SHEET 1 OF 1			

Regime - S1

Altitude - 1000m

Environment Temperature - 40°C

CONTACTS:

UNIVERSAL MOTORS Tel: +351 252 299 080
 Rua de São Brás, 745 Fax: +351 252 299 089
 4480-782 VILA DO CONDE Mail: geral@universalmotors.pt

* References applied only in the UK